

**ECONOMIC INDICATORS, NEW SOUTH WALES  
NOVEMBER 1995**

---

**MAIN FEATURES**

**EMPLOYMENT**

The seasonally adjusted number of employed persons in NSW was 2 791 600 in October 1995, a rise of 0.1% on the previous month and of 4.2% since October 1994. Nationally, there was a fall of 0.4% in employment from September to October 1995.

**UNEMPLOYMENT**

The seasonally adjusted number of unemployed persons in NSW was 230 900 in October 1995, a rise of 0.5% on the previous month. The seasonally adjusted unemployment rate in October 1995 was 7.6% in NSW and 8.7% nationally.

**BUILDING APPROVALS**

The seasonally adjusted number of new dwelling units approved in NSW in September 1995 was 3 624, an increase of 0.5% on the previous month.

**FINANCE**

The value of housing finance commitments for owner occupation in NSW in September 1995 fell by 4.5% from the previous month and was 5.5% lower than in September 1994. The value of personal and commercial finance commitments made in NSW in September 1995 declined by 11.5% and rose by 6.4% respectively from August 1995.

**PRIVATE NEW CAPITAL  
EXPENDITURE**

Private new capital expenditure in NSW increased by 27.3% in the June quarter compared to the previous quarter. Expenditure on new equipment, plant and machinery rose 34.3%, while expenditure on new buildings and other structures rose by 3.6%.

---

**NOTES**

This publication provides information on a wide range of economic indicators which are the latest available at the time of publication. In a number of cases, figures appearing in this summary are preliminary and are subject to revision in subsequent issues.

For detailed explanatory notes and definitions for the items shown in this publication, readers are referred to the specific ABS publications.

Current publications produced by the ABS are listed in the *Catalogue of Publications* (1101.0). A *Release Advice* (1105.0) is issued on Tuesdays and Fridays which lists publications to be released in the next few days. These publications are available from any ABS office.

Gregory W. Bray  
Deputy Commonwealth Statistician

---

**INQUIRIES:**

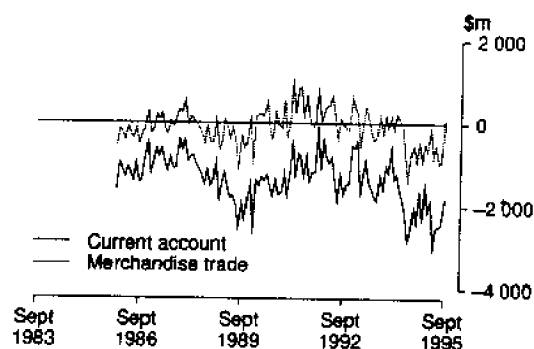
- for further information about statistics in this publication and the availability of related unpublished statistics, contact Bill Markham on Sydney (02) 268 4376 or any ABS office.
  - for information about other ABS statistics and services please contact Information Services on Sydney (02) 268 4611 or any ABS office.
-

# 1

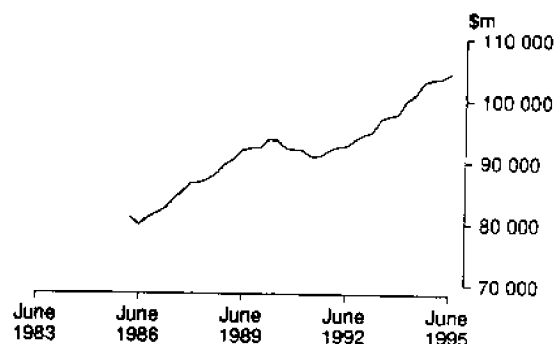
## NATIONAL ECONOMY

Indicator	Unit	Latest period	Change over prior period	Change over year			
<b>National Accounts percentage change, average 1989-90 prices, (seasonally adjusted)—</b>							
Gross non-farm product	%	June qtr 95	0.8	4.3			
Gross domestic product	%	June qtr 95	0.7	3.4			
<i>Figures for preceding periods</i>							
Indicator	Unit	Latest period	Latest figure	One period ago	Two periods ago	Three periods ago	Figure one year ago
<b>Balance of payments—</b>							
Merchandise exports	\$m	Sept. 95	6 200	6 066	6 236	5 693	5 281
Merchandise imports	\$m	Sept. 95	-6 120	-6 955	-7 190	-6 217	-5 281
Balance on merchandise trade	\$m	Sept. 95	80	-889	-954	-524	-6 068
Balance on goods and services	\$m	Sept. 95	-288	-1 041	-1 005	-824	-787
Balance on current account	\$m	Sept. 95	-1 819	-2 422	-2 488	-2 531	-1 133
Balance on current account (seasonally adjusted)	\$m	Sept. 95	-1 574	-1 524	-2 003	-2 542	-2 629
<b>Terms of trade for goods and services—</b>							
Index (seasonally adjusted) 1989-90 = 100		June qtr 95	93.6	92.4	91.5	89.2	88.4
<b>Exchange Rates at end of period—</b>							
\$US/\$A		Sept. 95	0.7550	0.7524	0.7389	0.7086	0.7393
Trade weighted index of value \$A	May 1970 = 100	Sept. 95	53.8	53.9	51.0	48.4	53.4
<b>Interest Rates—</b>							
Prime rate (Source: Reserve Bank)	%	Oct. 95	10.65-10.75	10.65-10.75	10.65-10.75	10.65-10.75	9.00-9.75

**BALANCE OF PAYMENTS AUSTRALIA (Monthly)**



**GROSS DOMESTIC PRODUCT, AUSTRALIA SEASONALLY ADJUSTED (Average 1989-1990 prices, quarterly)**

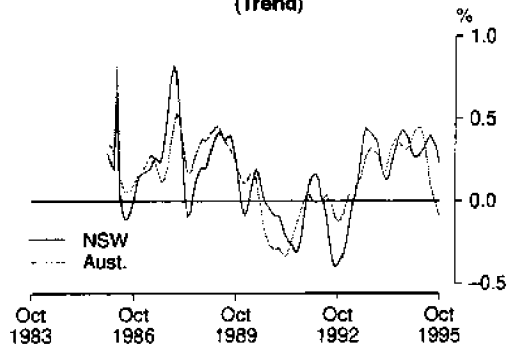


# 2

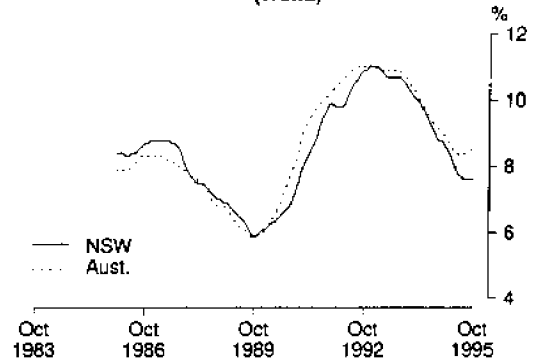
## NEW SOUTH WALES IN RELATION TO OTHER STATES AND AUSTRALIA

Indicator	Latest period	NSW	Vic.	Qld	SA	WA	Tas.	Aust.
		%	%	%	%	%	%	%
Unemployment rate (seasonally adjusted)	Oct. 95	7.6	9.7	10.1	9.7	7.3	8.9	8.7
<b>Percentage change from previous year—</b>								
Employed persons	Oct. 95	4.2	1.9	2.7	0.7	3.0	2.5	2.8
Consumer price index: all groups	Sept. qtr 95	5.7	4.8	4.8	4.5	5.0	4.5	5.1
Average weekly employee earnings: full-time adult ordinary time (trend estimates)	Aug. 95	6.5	4.3	4.7	2.6	6.1	2.0	5.1
Retail turnover (trend estimates)	Sept. 95	7.8	7.6	8.0	12.9	7.1	2.3	8.0
New motor vehicle registrations	Sept. 95	-9.9	5.5	-2.3	-4.6	-4.9	-1.0	-2.2
Dwelling units approved	Sept. 95	-37.7	-21.7	-49.6	-44.8	-42.3	-20.0	-39.4
Value of non-residential building approved	Sept. 95	23.3	90.3	95.3	-5.9	27.7	140.0	53.4
Value of all buildings approved	Sept. 95	-18.0	15.4	-13.5	-29.4	-16.0	11.1	-11.0
Value of engineering construction work done	June qtr 95	12.0	-2.2	1.6	0.7	3.2	-7.8	4.5
Room occupancy rate in licensed hotels and motels etc.	June qtr 95	5.8	6.2	-0.7	5.5	4.9	-5.5	3.7
Actual private new capital expenditure	June qtr 95	10.4	20.0	33.6	24.2	13.5	9.7	17.3

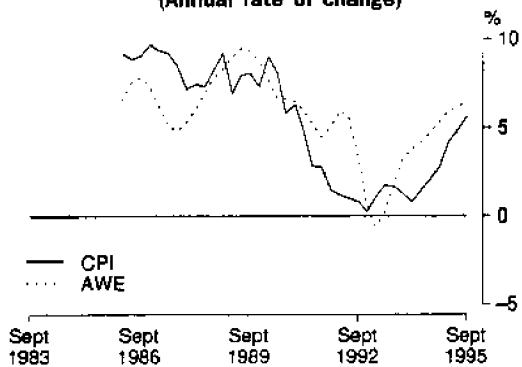
**MONTHLY CHANGE IN NUMBER OF PERSONS EMPLOYED (Trend)**



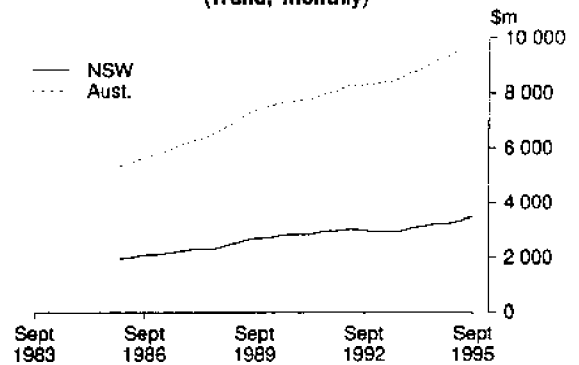
**UNEMPLOYMENT RATE (Trend)**



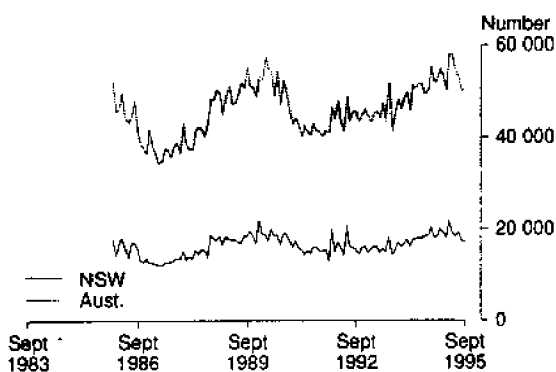
**PRICES AND EARNINGS, NSW (Annual rate of change)**



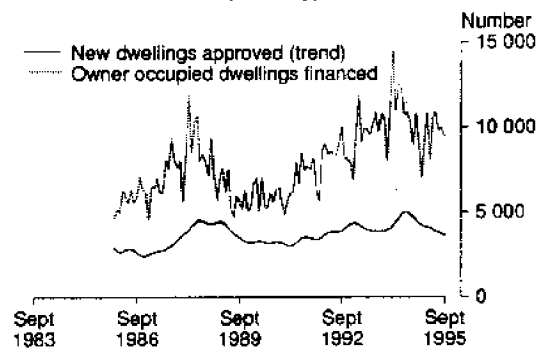
**RETAIL TURNOVER (Trend, monthly)**



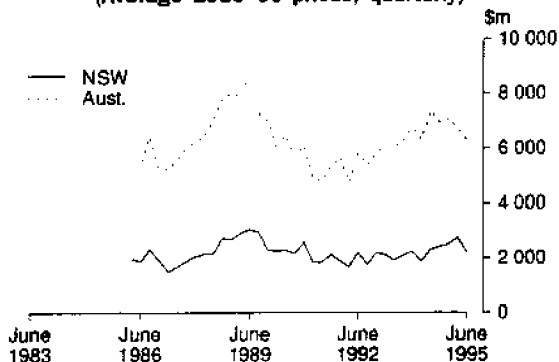
**NEW MOTOR VEHICLES REGISTERED (Monthly)**



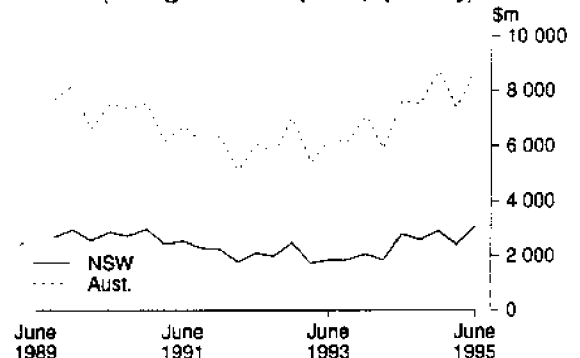
**NEW DWELLINGS APPROVED AND HOUSING FINANCE COMMITMENTS, NSW (monthly)**



**VALUE OF ALL BUILDINGS COMMENCED (Average 1989-90 prices, quarterly)**



**PRIVATE NEW CAPITAL EXPENDITURE (Average 1989-90 prices, quarterly)**



Indicator	Unit	Latest period	New South Wales		Australia			
			Latest figure	Change from prior period	Change from same period prior year	Latest figure	Change from prior period	Change from same period prior year
			%	%	%	%		
<b>Population</b>								
Estimated resident population	'000s	Mar. qtr 95	6 098	0.32	0.94	18 001	0.38	1.11
Civilian population aged 15 years and over	'000s	Oct. 95	4 816	0.10	1.18	14 189	0.12	1.43
<b>Labour Force</b>								
Employed persons—full-time (original series)	'000s	Oct. 95	2 138	-1.0	3.3	6 242	-0.7	2.7
—total (original series)	'000s	Oct. 95	2 793	-0.6	4.2	8 263	-0.9	2.8
—total (seasonally adjusted)	'000s	Oct. 95	2 792	0.1	4.2	8 224	-0.4	2.8
Unemployed persons—(original series)	'000s	Oct. 95	222	-3.6	-10.0	739	-3.2	-1.9
—(seasonally adjusted)	'000s	Oct. 95	231	0.5	-10.2	788	3.2	-1.9
Labour force (seasonally adjusted)	'000s	Oct. 95	3 023	0.1	2.9	9 012	-0.1	2.4
Participation rate (seasonally adjusted)	%	Oct. 95	62.8	0.0	1.7	63.5	-0.2	1.0
Unemployment rate (seasonally adjusted)	%	Oct. 95	7.6	0.4	-12.7	8.7	3.3	-4.2
Job vacancies	'000s	Aug. 95	32	33.8	13.6	62	15.3	-9.8
Weekly paid overtime per employee (a)	hours	Aug. 95	6.9	-2.1	1.6	6.8	-4.7	-3.9
<b>Average Weekly Employee Earnings</b>								
Full-time adult ordinary time earnings (trend estimates)	\$	Aug. 95	686.00	1.8	6.5	654.20	1.3	5.1
All employees total earnings (trend estimates)	\$	Aug. 95	579.20	0.9	3.7	551.30	0.6	2.4
Industrial Disputes—Working days lost	'000s	July 95	3.0	-54.5	-71.4	35.9	-8.2	0.3
Consumer Price Index, All Groups 1989-90=100		Sept. qtr 95	117.3	1.6	5.7	117.6	1.2	5.1
Retail Turnover (trend estimates)	\$m	Sept. 95	3 496	0.7	7.8	9 925	0.5	8.0
New Motor Vehicle Registrations (seasonally adjusted)	No.	Sept. 95	17 273	-0.7	-6.5	50 626	0.7	0.5
Passenger vehicles (seasonally adjusted)	No.	Sept. 95	14 647	-0.4	-7.4	42 014	-0.2	0.3
Other motor vehicles (excl. motor cycles) (seas. adj.)	No.	Sept. 95	2 626	-2.3	-7.3	8 612	5.3	1.6
<b>Production</b>								
Clay bricks (seasonally adjusted) (b)	million	Sept. 95	57	9.4	-4.7	134	6.6	-15.0
Electricity (seasonally adjusted)	million kWh	Sept. 95	(c)	(c)	(c)	13 857	2.4	1.8
Gas (seasonally adjusted) (b)	terajoules	Sept. 95	(c)	(c)	(c)	49 154	1.6	-6.8
<b>Overseas Trade</b>								
Imports	\$m	Oct. 95	3 023	5.7	8.6	6 956	10.7	10.6
Exports, Australian produce	\$m	Sept. 95	1 283	-13.7	4.6	5 913	1.9	16.5
<b>Tourism</b>								
Overseas visitor short-term arrivals	'000s	Sept. 95	119	-7.9	8.6	269	-11.9	5.7
Resident overseas short-term departures	'000s	Sept. 95	103	28.3	5.2	255	28.9	5.4
Licensed hotels, motels etc. with facilities—								
Guest nights	'000s	June qtr 95	5 039	-5.3	4.4	14 585	-5.7	2.6
Room occupancy rate	%	June qtr 95	56.6	-3.7	5.8	56.1	-3.4	3.7
<b>Building</b>								
Approvals—								
Dwelling units (seasonally adjusted)	No.	Sept. 95	3 624	0.5	-34.5	10 908	4.5	-36.2
Value of new residential building (seasonally adj.)	\$m	Sept. 95	361	-3.8	-25.9	1 055	5.8	-29.8
Value of non-residential building	\$m	Sept. 95	256	-46.9	23.3	865	-22.5	53.4
Value of all building	\$m	Sept. 95	755	-21.1	-18.0	2 147	-11.0	-11.0
Commencements—								
New dwelling units	No.	June qtr 95	11 976	5.6	-9.9	35 949	1.9	-23.1
Value of new residential buildings (d)	\$m	June qtr 95	1 184	-2.4	-4.5	3 338	1.3	-16.2
Value of non-residential building (d)	\$m	June qtr 95	755	-43.4	-7.1	2 391	-19.2	-13.5
Value of all building (d)	\$m	June qtr 95	2 166	-21.2	-6.8	6 266	-6.9	-15.0
Value of work done in period (d)	\$m	June qtr 95	2 440	14.7	5.8	6 793	9.0	-0.1
<b>Engineering Construction</b>								
Private contractors—								
Value of work commenced	\$m	June qtr 95	430	-9.0	3.2	1 511	-18.1	-12.9
Value of work done	\$m	June qtr 95	566	4.8	-5.2	1 727	8.4	-3.3
Value of work yet to be done	\$m	June qtr 95	1 422	0.9	50.7	3 666	0.1	29.9
Value of work done by public sector	\$m	June qtr 95	826	50.4	27.9	1 987	39.5	12.4
<b>Finance</b>								
Housing finance for owner occupation—secured commitments to individuals by significant lenders	\$m	Sept. 95	1 345	-4.5	-5.5	3 771	-6.9	-7.6
Personal finance commitments—significant lenders	\$m	Sept. 95	820	-11.5	15.6	2 464	-12.0	15.2
Commercial finance commitments—significant lenders	\$m	Sept. 95	5 271	6.4	35.6	10 803	0.8	30.1
Savings balances at end of month—								
All banks (e) (Source: Reserve Bank)	\$m	Sept. 95	119 286	1.8	(f)	267 304	1.8	9.8
Building societies	\$m	Sept. 95	3 507	0.8	11.3	11 032	0.7	-2.5
Credit unions	\$m	Sept. 95	5 701	1.6	17.0	12 863	1.1	14.5
<b>Actual New Fixed Capital Expenditure (g)</b>								
New buildings and structures	\$m	June qtr 95	3 255	27.3	10.4	9 519	20.9	17.3
Equipment, plant and machinery	\$m	June qtr 95	609	3.6	-2.3	2 427	9.0	14.8
Equipment, plant and machinery	\$m	June qtr 95	2 646	34.3	13.7	7 092	25.6	18.2

(a) Average weekly overtime hours for those employees who were paid for overtime. (b) Includes Australian Capital Territory. (c) Not available for publication but included in totals where applicable. (d) Average of 1989-90 prices. (e) Average of weekly deposit balances. (f) Not available due to revisions only being done nationally. (g) By private enterprises.



2130710011954

ISSN 1031-8534